

Home report

6394 Go Home Lake Shore, Port Severn, Muskoka Lakes,
Ontario, Canada, L0K 1S0



Total Area: 1793 sq. ft

Below Ground: 0 sq. ft, Floor 2: 1395 sq. ft, Floor 3: 398 sq. ft

Excluded: Storage 312 sq. ft, Outdoor Patio 317 sq. ft, Outdoor Deck 1100 sq. ft, Outdoor Balcony 86 sq. ft, Embedded window 26 sq. ft, Fireplace 14 sq. ft

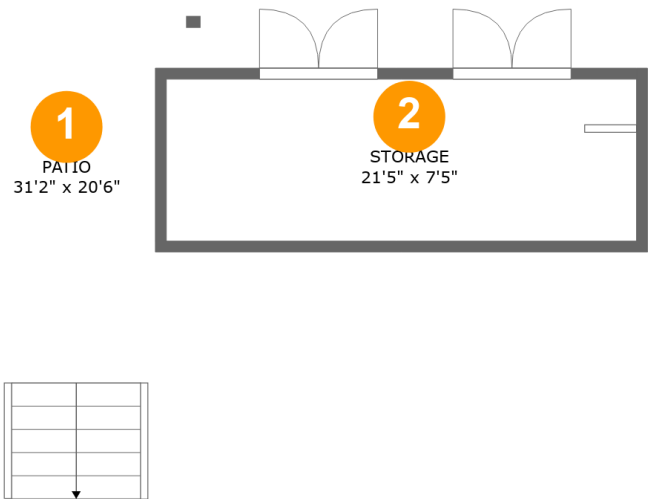
Property summary

 **3** Floors

 **5** Bedrooms

 **2** Bathrooms

6394 Go Home Lake Shore, Port Severn, Muskoka Lakes,
Ontario, Canada, L0K 1S0



Room dimensions

Floor 1 Below ground Total:0sqft Excluded: 505sqft

#		Max Dimensions	sqft	Included
1	Patio	31'2" x 20'6"	317 sq. ft	No
2	Storage	21'5" x 7'5"	158 sq. ft	No

Home report

6394 Go Home Lake Shore, Port Severn, Muskoka Lakes,
Ontario, Canada, L0K 1S0



Room dimensions

Floor 2 Total:1395sqft Excluded: 1106sqft

#		Max Dimensions	sqft	Included
3	Deck	39'8" x 37'0"	882 sq. ft	No
4	Bath	6'6" x 10'7"	68 sq. ft	Yes
5	Balcony	26'5" x 3'3"	86 sq. ft	No
6	Breakfast Nook	17'2" x 12'8"	216 sq. ft	Yes
7	Primary Bedroom	13'5" x 10'7"	142 sq. ft	Yes
8	Bedroom	8'11" x 10'7"	79 sq. ft	Yes
9	Living Room	25'11" x 12'8"	341 sq. ft	Yes
10	Kitchen	12'5" x 12'8"	156 sq. ft	Yes
11	Bedroom	7'4" x 10'7"	78 sq. ft	Yes
12	Laundry	5'10" x 10'7"	61 sq. ft	Yes
13	Dining Area	12'3" x 10'11"	133 sq. ft	Yes

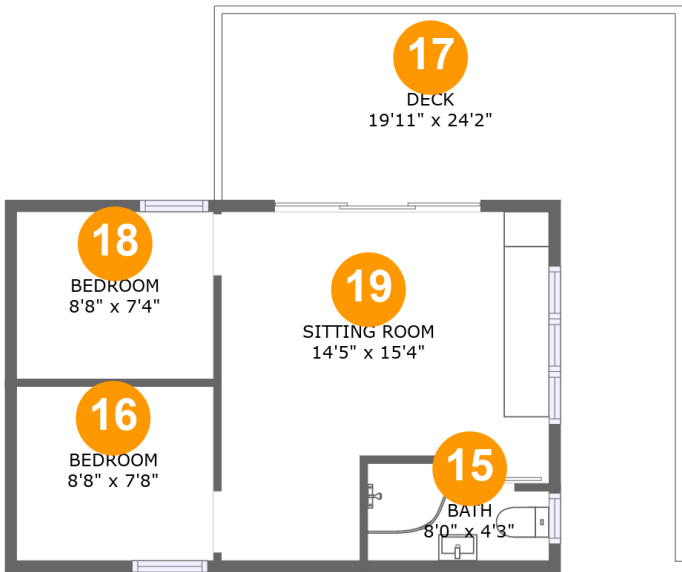
Home report

6394 Go Home Lake Shore, Port Severn, Muskoka Lakes,
Ontario, Canada, L0K 1S0

#		Max Dimensions	sqft	Included
14	Storage	11'1" x 9'3"	103 sq. ft	No

Home report

6394 Go Home Lake Shore, Port Severn, Muskoka Lakes,
Ontario, Canada, L0K 1S0



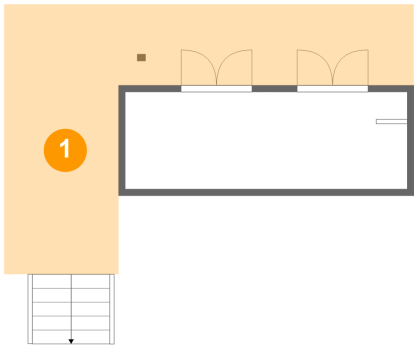
Room dimensions

Floor 3 Total:398sqft Excluded: 244sqft

#		Max Dimensions	sqft	Included
15	Bath	8'0" x 4'3"	28 sq. ft	Yes
16	Bedroom	8'8" x 7'8"	66 sq. ft	Yes
17	Deck	19'11" x 24'2"	244 sq. ft	No
18	Bedroom	8'8" x 7'4"	64 sq. ft	Yes
19	Sitting Room	14'5" x 15'4"	188 sq. ft	Yes

6394 Go Home Lake Shore, Port Severn, Muskoka Lakes,
Ontario, Canada, L0K 1S0

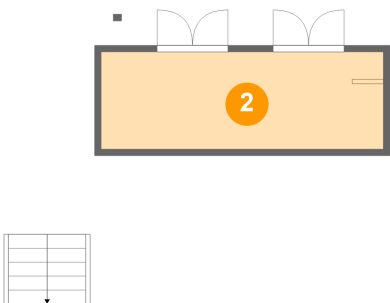
1 Floor 1 - Patio



Max Dimensions: 31'2" x 20'6"
Calculated Area: 317 sq. ft
Included: No

Heated: No
Finished: Yes
Enclosed: No
Contiguous: Yes
Permitted: Yes
Wet space: No
Addition: No
Conversion: No

2 Floor 1 - Storage



Max Dimensions: 21'5" x 7'5"
Calculated Area: 158 sq. ft
Included: No

Heated: No
Finished: No
Enclosed: No
Contiguous: Yes
Permitted: Yes
Wet space: No
Addition: No
Conversion: No

6394 Go Home Lake Shore, Port Severn, Muskoka Lakes,
Ontario, Canada, L0K 1S0

3 Floor 2 - Deck



Max Dimensions: 39'8" x 37'0"
Calculated Area: 882 sq. ft
Included: No

Heated: No
Finished: Yes
Enclosed: No
Contiguous: Yes
Permitted: Yes
Wet space: No
Addition: No
Conversion: No

4 Floor 2 - Bath



Max Dimensions: 6'6" x 10'7"
Calculated Area: 68 sq. ft
Included: Yes

Heated: Yes
Finished: Yes
Enclosed: Yes
Contiguous: Yes
Permitted: Yes
Wet space: Yes
Addition: No
Conversion: No

5 Floor 2 - Balcony



Max Dimensions: 26'5" x 3'3"
Calculated Area: 86 sq. ft
Included: No

Heated: No
Finished: Yes
Enclosed: No
Contiguous: Yes
Permitted: Yes
Wet space: No
Addition: No
Conversion: No

6394 Go Home Lake Shore, Port Severn, Muskoka Lakes,
Ontario, Canada, L0K 1S0

6 Floor 2 - Breakfast Nook



Max Dimensions: 17'2" x 12'8"
Calculated Area: 216 sq. ft
Included: Yes

Heated: Yes
Finished: Yes
Enclosed: Yes
Contiguous: Yes
Permitted: Yes
Wet space: No
Addition: No
Conversion: No

7 Floor 2 - Primary Bedroom



Max Dimensions: 13'5" x 10'7"
Calculated Area: 142 sq. ft
Included: Yes

Heated: Yes
Finished: Yes
Enclosed: Yes
Contiguous: Yes
Permitted: Yes
Wet space: No
Addition: No
Conversion: No

8 Floor 2 - Bedroom



Max Dimensions: 8'11" x 10'7"
Calculated Area: 79 sq. ft
Included: Yes

Heated: Yes
Finished: Yes
Enclosed: Yes
Contiguous: Yes
Permitted: Yes
Wet space: No
Addition: No
Conversion: No

6394 Go Home Lake Shore, Port Severn, Muskoka Lakes,
Ontario, Canada, L0K 1S0

9 Floor 2 - Living Room



Max Dimensions: 25'11" x 12'8"
Calculated Area: 341 sq. ft
Included: Yes

Heated: Yes
Finished: Yes
Enclosed: Yes
Contiguous: Yes
Permitted: Yes
Wet space: No
Addition: No
Conversion: No

10 Floor 2 - Kitchen



Max Dimensions: 12'5" x 12'8"
Calculated Area: 156 sq. ft
Included: Yes

Heated: Yes
Finished: Yes
Enclosed: Yes
Contiguous: Yes
Permitted: Yes
Wet space: No
Addition: No
Conversion: No

11 Floor 2 - Bedroom



Max Dimensions: 7'4" x 10'7"
Calculated Area: 78 sq. ft
Included: Yes

Heated: Yes
Finished: Yes
Enclosed: Yes
Contiguous: Yes
Permitted: Yes
Wet space: No
Addition: No
Conversion: No

6394 Go Home Lake Shore, Port Severn, Muskoka Lakes,
Ontario, Canada, L0K 1S0

12 Floor 2 - Laundry



Max Dimensions: 5'10" x 10'7"
Calculated Area: 61 sq. ft
Included: Yes

Heated: Yes
Finished: Yes
Enclosed: Yes
Contiguous: Yes
Permitted: Yes
Wet space: No
Addition: No
Conversion: No

13 Floor 2 - Dining Area



Max Dimensions: 12'3" x 10'11"
Calculated Area: 133 sq. ft
Included: Yes

Heated: Yes
Finished: Yes
Enclosed: Yes
Contiguous: Yes
Permitted: Yes
Wet space: No
Addition: No
Conversion: No

14 Floor 2 - Storage

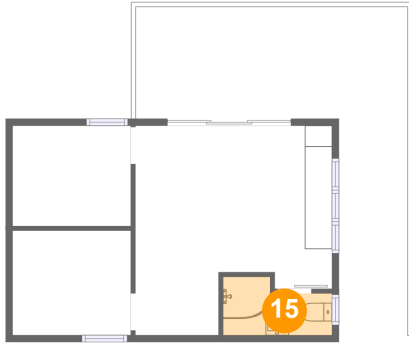


Max Dimensions: 11'1" x 9'3"
Calculated Area: 103 sq. ft
Included: No

Heated: No
Finished: No
Enclosed: No
Contiguous: Yes
Permitted: Yes
Wet space: No
Addition: No
Conversion: No

6394 Go Home Lake Shore, Port Severn, Muskoka Lakes,
Ontario, Canada, L0K 1S0

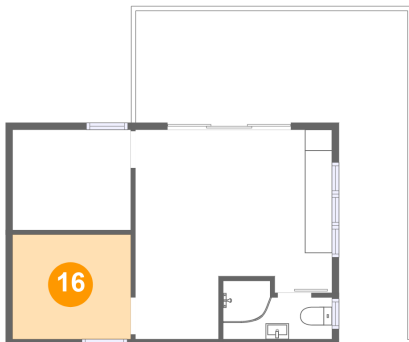
15 Floor 3 - Bath



Max Dimensions: 8'0" x 4'3"
Calculated Area: 28 sq. ft
Included: Yes

Heated: Yes
Finished: Yes
Enclosed: Yes
Contiguous: Yes
Permitted: Yes
Wet space: Yes
Addition: No
Conversion: No

16 Floor 3 - Bedroom



Max Dimensions: 8'8" x 7'8"
Calculated Area: 66 sq. ft
Included: Yes

Heated: Yes
Finished: Yes
Enclosed: Yes
Contiguous: Yes
Permitted: Yes
Wet space: No
Addition: No
Conversion: No

17 Floor 3 - Deck

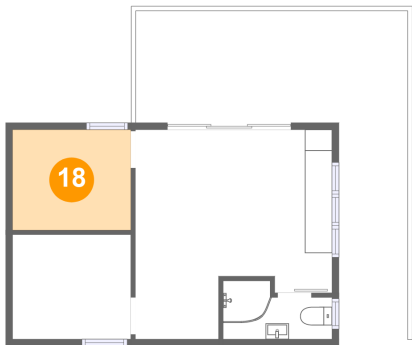


Max Dimensions: 19'11" x 24'2"
Calculated Area: 244 sq. ft
Included: No

Heated: No
Finished: Yes
Enclosed: No
Contiguous: Yes
Permitted: Yes
Wet space: No
Addition: No
Conversion: No

6394 Go Home Lake Shore, Port Severn, Muskoka Lakes,
Ontario, Canada, L0K 1S0

18 Floor 3 - Bedroom



Max Dimensions: 8'8" x 7'4"
Calculated Area: 64 sq. ft
Included: Yes

Heated: Yes
Finished: Yes
Enclosed: Yes
Contiguous: Yes
Permitted: Yes
Wet space: No
Addition: No
Conversion: No

19 Floor 3 - Sitting Room



Max Dimensions: 14'5" x 15'4"
Calculated Area: 188 sq. ft
Included: Yes

Heated: Yes
Finished: Yes
Enclosed: Yes
Contiguous: Yes
Permitted: Yes
Wet space: No
Addition: No
Conversion: No